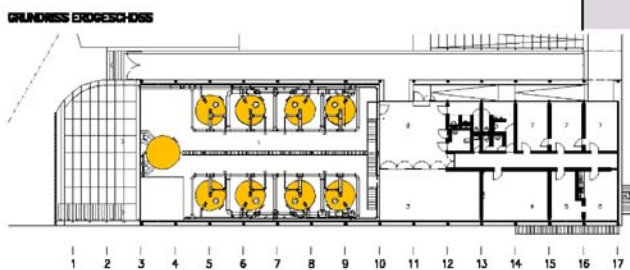
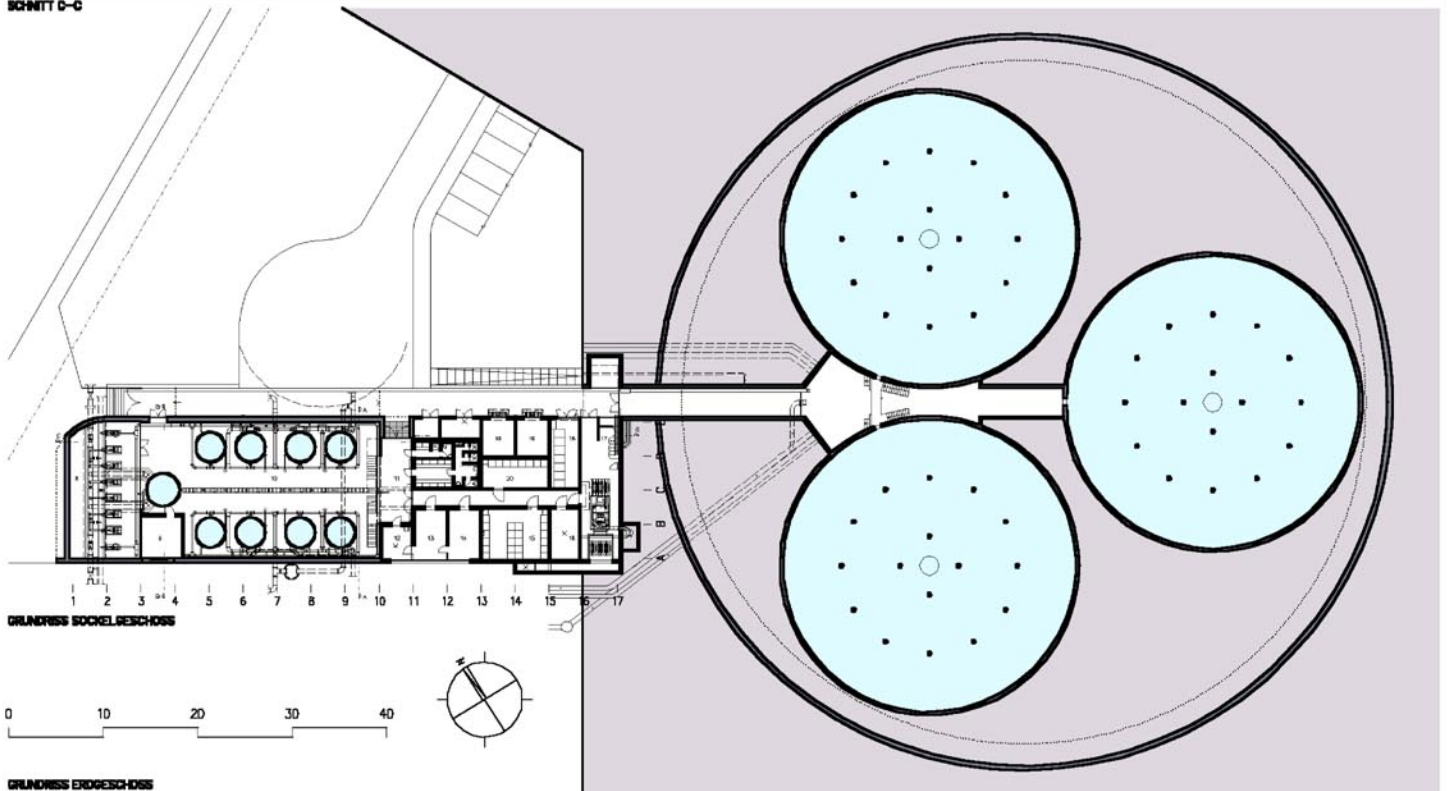
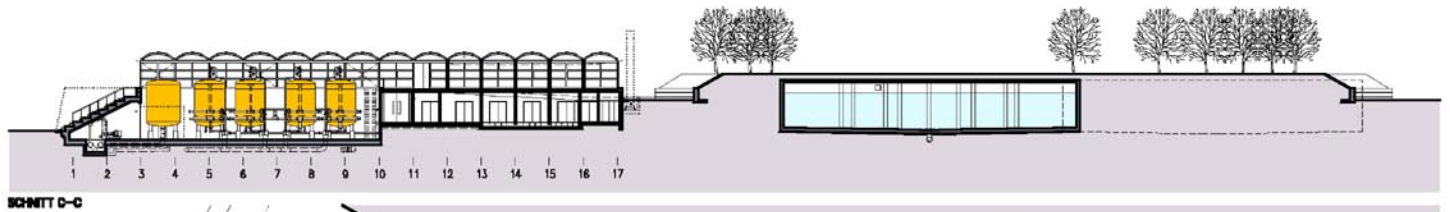
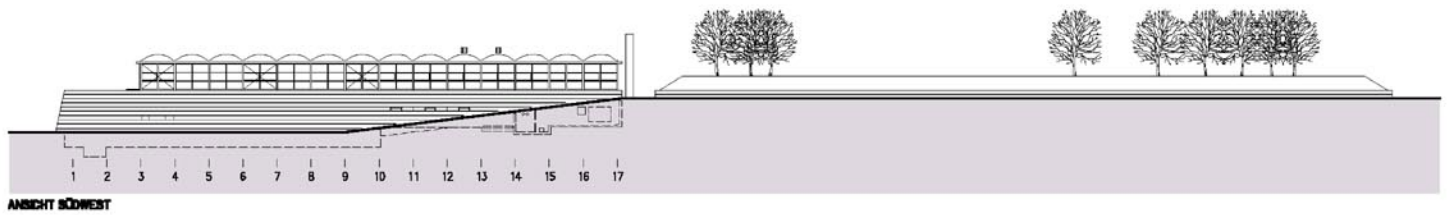
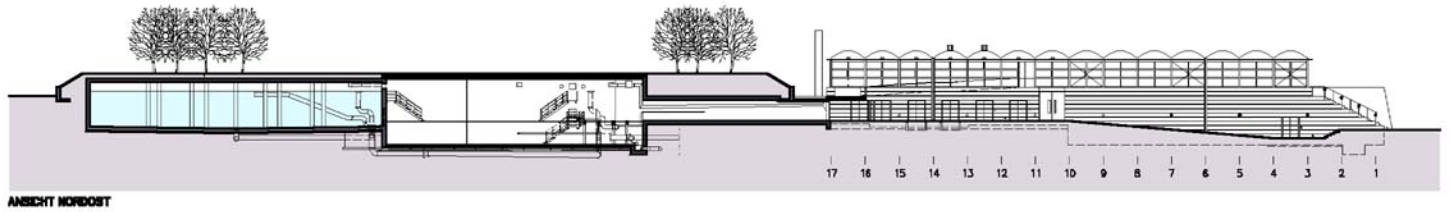
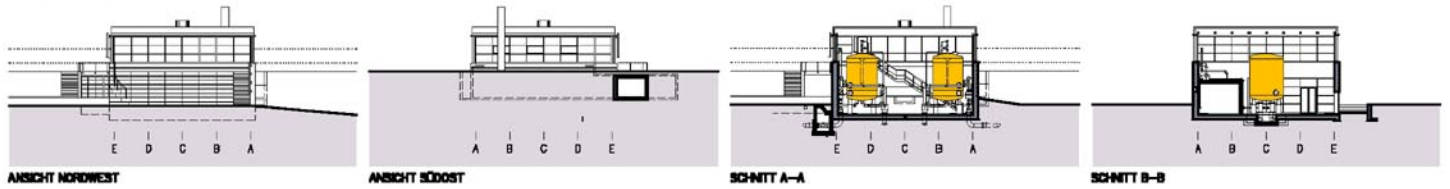


# Wasserwerk Mühlenscharn Schwerin



- GRUNDRISS ERDGESCHOSS**
- 1 Luftraum Filterhalle
  - 2 Eingangshalle
  - 3 Besprechungsraum
  - 4 Schaltwarte
  - 5 Abstellraum
  - 6 Tasköche / Aufenthalt
  - 7 Büro
- GRUNDRISS SOCKELGESCHOSS**
- 8 Rohwasserpumpwerk
  - 9 Kompressorenraum
  - 10 Filterhalle
  - 11 Anlieferung Werkstätten / Elektrotechnik
  - 12 Labor
  - 13 M-Werkstatt
  - 14 E-Werkstatt
  - 15 Niederspannung I
  - 16 Hochtechnik
  - 17 Nebelstromaggregat
  - 18 Mittelspannung
  - 19 Troferraum
  - 20 Niederspannung II

